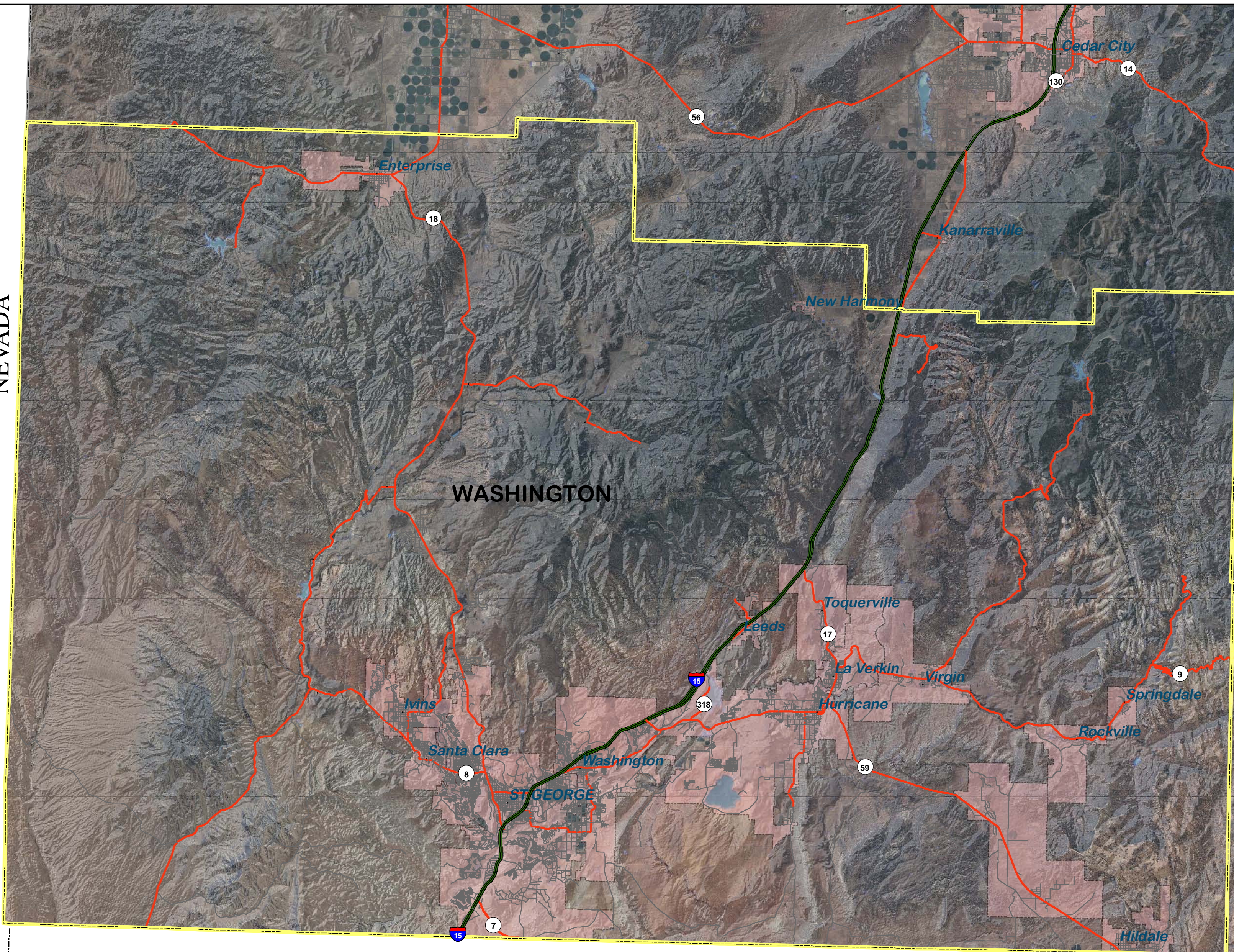
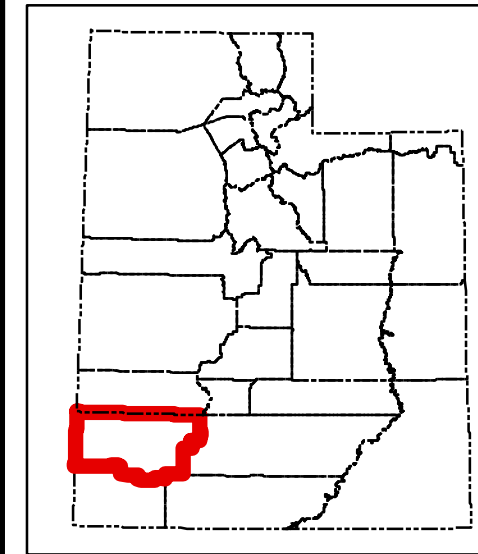


NEVADA



ARIZONA

**Location Map**



**Legend**

- Selected County
- County Boundaries
- Municipalities
- Utah Streets & Roads**
- Freeway
- US Highway
- State Highway
- Local

**Description**

The geographic boundaries of Washington County are described as follows:

Beginning at the intersection of the line between townships 36 and 37 south and the western boundary of the state of Utah, thence east to the line between ranges 15 and 16 west; thence north to the northwest corner of township 37 south, range 15 west; thence east to the northeast corner of township 37 south, range 15 west; thence south to the southeast corner of township 37 south, range 15 west; thence east to the southeast corner of township 37 south, range 13 west; thence south to the northeast corner of section 24, township 38 south, range 13 west; thence east on the section line to the intersection of the range line between ranges 11 and 12 west; thence south on that range line to the southwest corner of section 18, township 38 south, range 11 west; thence east on the section line to the intersection of the range line between ranges 10 and 11 west; thence north along the range line to the southwest corner of section 18, township 38 south, range 10 west; thence east on the section line to the intersection of the range line between ranges 9 and 10 west at the northeast corner of section 24, township 38 south, range 10 west; thence south on that range line to the south boundary line of the state of Utah; thence west along the Utah-Arizona boundary line to the west boundary line of the state of Utah; thence north along said west boundary line to the point of beginning.

**Narrative**

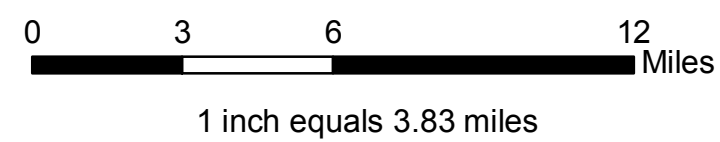
This map has been created to fulfill the requirements under Section 17-50-104, State of Utah Code: Counties of the state – County boundaries maintained by Lieutenant Governor. The counties of the state are those whose geographic boundaries are described in the official county boundary records maintained by the office of the lieutenant governor and may be changed only in accordance with the provisions of this title. The office of the lieutenant governor shall maintain the official county boundaries for the counties of the state and update those boundaries upon the lieutenant governor's issuance, under Section 67-1a-6.5, of an applicable certificate, as defined in that section. The county boundary described on this map has been created from the original county description. If changes have been made to the county boundary in accordance with the provisions outlined in state code, the changes are shown in the graphic representation of the boundary; the calls from the boundary adjustment plat have been added to the original description and a reference to the certification document points to the area of change. This map provides a general graphic location of the boundary without being tied to the ground using the Public Land Survey System. If more accurate information is needed, a ground survey is required.

**Certification**

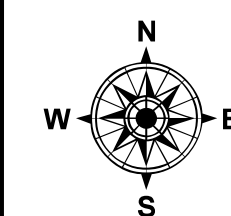
I Sean A. Fernandez, Professional Land Surveyor, as prescribed by the laws of the State of Utah and holding license No. 312775 do hereby certify: That this map was prepared by me or under my direction together with the best available data; That due care was exercised in preparing this map; That this map is a geographic representation of the County Boundary to the best of my knowledge and conviction.

**DRAFT**

**Greg Bell**  
 LIEUTENANT GOVERNOR  
 Utah State Capitol  
 Suite 220  
 Salt Lake City UT 84114  
[elections@utah.gov](mailto:elections@utah.gov)



**Sean A. Fernandez PLS**  
 STATE CADASTRAL SURVEYOR  
 Automated Geographic Reference Center (AGRC)  
 1 State Office Building, Rm 5130  
 Salt Lake City, Ut 84114  
<http://gis.utah.gov/surveyresources>



**Washington County Boundary Map**

Drawn By: Mike Heagin      Checked by: Sean Fernandez PLS

Print Date: April 5, 2010